

Energy and Resources Day 1

GO POWER



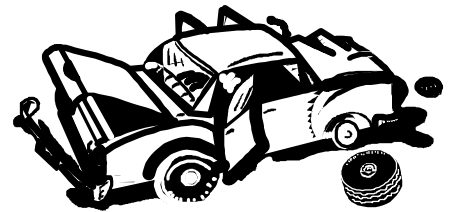
Situation

A local car dealer is having a contest to see who can invent a car that is propelled (moved forward) by a falling weight. Only models that meet the requirements listed will be judged.



Problem

Your team has decided to enter the "Go Power" design contest. Design, build, and test your car to get rid of any problems before the time of the contest.



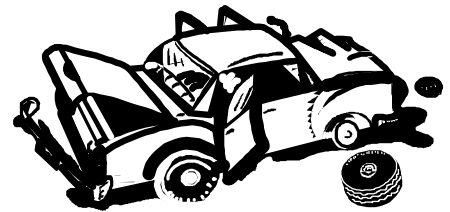
Objectives

Students will use creativity and problem solving to build a car that is propelled by a falling weight. Students will learn how energy can be transferred into motion.



Materials

- 1 Lego Technic 1031 kit per group
- 1 set of Lego Technic resource cards per group



Requirements

Your grade will be based on the following performance:

You must present a car for the contest. The car must be propelled by a falling weight (the Lego weighted block) and carry the weight. The falling weight must be the only source of energy moving the car.

- A = car that travels 24" or greater and carries the weight
- B = car that travels 12" - 14" and carries the weight
- C = car that travels 1" - 12" and carries the weight
- D = car that moves but does not carry the weight
- F = no car presented

